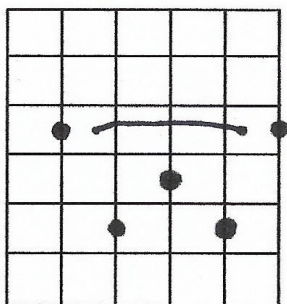


## Lesson 2 [nickpagejazzguitar.weebly.com](http://nickpagejazzguitar.weebly.com)

Commonly altered chords in a 1/V1/11/V are the V1 and V.

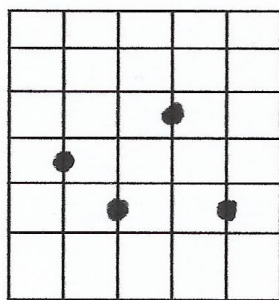
	1	V1	11	V
C Instruments	CΔ	A-	D-	G7
Let's look at the °7 <sup>th</sup> chord	CΔ	Db°7 (Db°) (Db,E,G,Bb)	D-	B°7 (B,D,F,Ab)
Becomes...	CΔ	A7b9 (A,Db,E,G,Bb)	D-	G7b9 (G,B,D,F,Ab)

CΔ



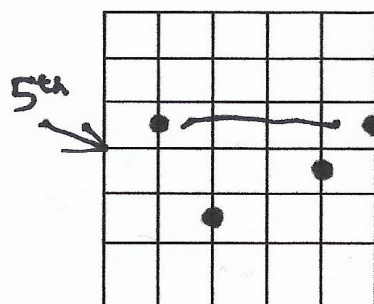
3 2 4

Db°7 (A7b9 NR)



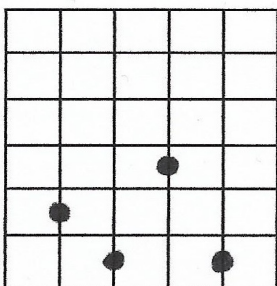
2 3 1 4

D-

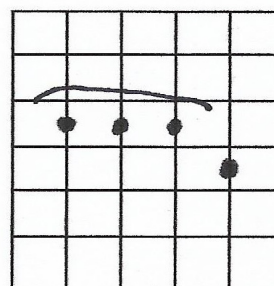


3 2

B°7 (G7b9 NR)



CMaj6/9 (NR)



2

	1	V1	11	V
Bb instruments	DΔ	B-	E-	A7
Let's look at the °7 <sup>th</sup> chord	DΔ	D#°7 (D#,,F#,A,C)	E-	C#°7 (C#,E,G,A#)
Becomes...	DΔ	B7b9 (B,D#,,F#,A,C)	E-	A7b9 (A,C#,E,G,A#)

	1	V1	11	V
Eb instruments	AΔ	F#-	B-	E7
Let's look at the °7 <sup>th</sup> chord	AΔ	A#°7 (A#,C#,E,G)	B-	G#°7 (G#,B,D,F)
Becomes...	AΔ	F#7b9 (F#,A#,C#,E,G)	B-	E7b9 (E,G#,B,D,F)